

# ★ **ALTAIRE** **TBR TYRE**

★ **ALTAIRE**

C A T A L O G U E

QINGDAO HANS TYRE CO.,LTD

No.72-1, Songling Rd., Laoshan Dist., Qingdao 266101, China  
Tel: +86-532-81927691  
Email: [info@hanstyre.com](mailto:info@hanstyre.com)  
Web: [www.hanstyre.com](http://www.hanstyre.com)

2018/19



ABOUT US

# COMPANY PROFILES

Qingdao HansTyre Co.,Ltd. was established in Chinese important port - Qingdao. As a professional enterprise, we are specialized in design, manufacture and sales in tyre business. After several years of development, our enterprise has been in a position to regularly supply full range of tyres, including PCR, LTR, TBR, OTR, etc. Our brand ALTAIRE ranks high quality level among Chinese brands.













Since the establishment of our enterprise, we always adhere to the principle "Customer-centered, Market-oriented". So far, the tyre business has formed a complete series of tyres, which are exported to Middle Asia, Southeast Asia, Europe, Africa, America and some other areas. All produced tyres have passed the certification of DOT, ECE, S-MARK, UL, GCC, INMETRO and etc. With a wide range of tyre category, innovation of decorative pattern design, superior product quality, competitive price, timely delivery and customer-first-service philosophy, our enterprise gets high praise and trust from our customers, wins good reputation till now.

Thanks the supports from all our partners, we will focus on the globalization and continue to supply high quality tires for clients all over the world with most convenient conditions.

 **ALTAIRE**



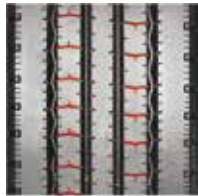
# ALTAIRE TRUCK & BUS RADIAL TIRES SPECIFICATION CHART

ROAD POSITION	STEERING POSITION	ALL POSITION	DRIVING POSITION	TRAILER
 <p>LONG HAUL</p>	     		    	     
 <p>REGIONAL</p>	      	    	 	     
 <p>MIXED SERVICE</p>	 		         	
 <p>MINING</p>		    		

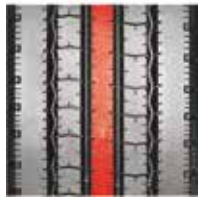


AS102 is a premium steer and trailer tyre for long haul road.  
Having excellent wet traction and water evacuation  
performance.

Pattern characteristic:



Cross rib sipes slice through water for  
solid control on wet roads.



Straight simple rib pattern improves  
even wearing and efficient water  
evacuation for excellent wet traction  
and handling.



SIZE	PR	STANDARD RIM	LI/SR	OUTER DIAMETER (mm)	SECTION WIDTH (mm)	MAX LOAD(KG) SINGLE/DUAL	MAX PRESSURE (KPA)
315/80R22.5	20	9.00	157/153L	1076	312	4125/3650	860

AS103 is a premium steer and trailer tyre for long haul road.

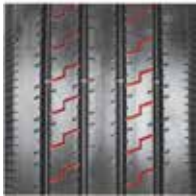
Pattern characteristic:



Shallow pattern grooves provide the tyre with  
strong grip and skid resistance.



The widened shoulder and unique  
shoulder groove design provide cool  
running and reduce uneven wear.



Zigzag grooves reduce stone retention.



SIZE	PR	STANDARD RIM	LI/SR	OUTER DIAMETER (mm)	SECTION WIDTH (mm)	MAX LOAD(KG) SINGLE/DUAL	MAX PRESSURE (KPA)
315/70R22.5	20	9.00	154/150M	1014	312	3750/3350	900



# AS105

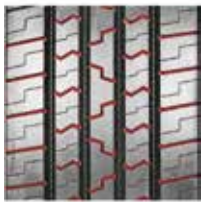


AS105 is a premium steer and trailer tyre for regional road. Super wide running surface, shoulder design, and special tread formula improve tread life.

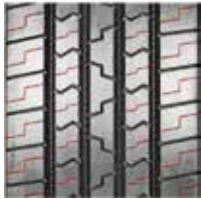
## Pattern characteristic:



The grooves provide low rolling resistance and enhance fuel efficiency.



Zigzag grooves reduce stone retention.



Small grooves allow the tyre to run cool and provide better grip to improve skid resistance.



SIZE	PR	STANDARD RIM	LI/SR	OUTER DIAMETER (mm)	SECTION WIDTH (mm)	MAX LOAD(KG) SINGLE/DUAL	MAX PRESSURE (KPA)
11.00R20	18	8.00	152/149K	1082	286	3550/3250	930

# AS106



AS106 is a steer and trailer tyre for regional road. All season performance on wet and dry roads.

## Pattern characteristic:



Horizontal grooves improve grip and slip resistance.



Four straight grooves provide excellent handling and driving performance.



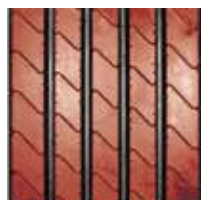
SIZE	PR	STANDARD RIM	LI/SR	OUTER DIAMETER (mm)	SECTION WIDTH (mm)	MAX LOAD(KG) SINGLE/DUAL	MAX PRESSURE (KPA)
295/80R22.5	18	9.00	152/149M	1044	298	3550/3250	900





AS123 is a premium steer and trailer tyre, for long haul and regional road. Four wide grooves provide all-season performance on wet and dry roads.

## Pattern characteristic:



5-rib design improved stability.



Shallow tread depth promotes low rolling resistance for fuel economy and even wear.



Interlocking multi-sipes improve traction in wet road condition and increase stability.



SIZE	PR	STANDARD RIM	LI/SR	OUTER DIAMETER (mm)	SECTION WIDTH (mm)	MAX LOAD(KG) SINGLE/DUAL	MAX PRESSURE (KPA)
11R22.5	14	8.25	144/142M	1050	279	2800/2650	720
11R24.5	14	8.25	146/143M	1100	279	3000/2725	720
285/75R24.5	14	8.25	144/141L	1056	283	2800/2575	760
295/75R22.5	14	9.00	144/141L	1014	298	2800/2575	760

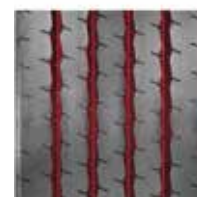


AS125 is a steer and trailer tyre for regional road.

## Pattern characteristic:



The widened shoulder and unique shoulder groove design provide cool running and reduce uneven wear.



Four grooves can effectively drain water.

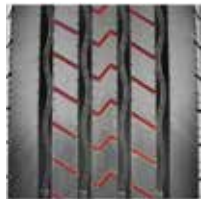


SIZE	PR	STANDARD RIM	LI/SR	OUTER DIAMETER (mm)	SECTION WIDTH (mm)	MAX LOAD(KG) SINGLE/DUAL	MAX PRESSURE (KPA)
11.00R20	18	8.00	152/149K	1082	286	3550/3250	930



AP202 is a premium steer and trailer tyre for long haul road.

## Pattern characteristic:



Tread sipes improve traction in wet conditions and allow the tyre to run cool to extend tread life.



Shallow tread design reduces rolling resistance for better fuel economy.



Unique tread wall grooves and sipes help reduce irregular wear.



SIZE	PR	STANDARD RIM	LI/SR	OUTER DIAMETER (mm)	SECTION WIDTH (mm)	MAX LOAD(KG) SINGLE/DUAL	MAX PRESSURE (KPA)
11R22.5	16	8.25	146/143M	1050	279	3000/2725	830
11R24.5	16	8.25	149/146M	1100	279	3250/3000	830
205/75R17.5	14	6.00	124/122M	753	205	1600/1500	750
215/75R17.5	16	6.00	126/124M	767	212	1700/1600	700
225/70R19.5	16	6.75	128/126M	811	226	1800/1700	760
235/75R17.5	16	6.75	132/130M	797	233	2000/1900	775
245/70R19.5	16	7.50	135/133M	833	248	2180/2060	830
255/70R22.5	16	7.50	140/137M	930	255	2500/2300	830
265/70R19.5	16	7.50	140/138M	867	262	2500/2360	775
275/70R22.5	16	8.25	148/145M	958	276	3150/2900	900
285/75R24.5	16	8.25	147/144L	1056	283	3075/2800	830
295/75R22.5	16	9.00	146/143L	1014	298	3000/2725	830

AP215 is a premium steer and trailer tyre for long haul road.

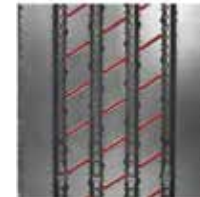
## Pattern characteristic:



Five ribs design and wide shoulders for improved stability.



Tread profile designed to reduce rolling resistance and improve fuel economy for greater stability and mileage.



Interlocking multi-slips improve traction in wet conditions and increase stability.

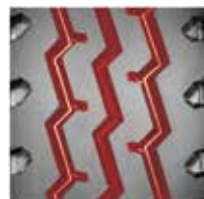


SIZE	PR	STANDARD RIM	LI/SR	OUTER DIAMETER (mm)	SECTION WIDTH (mm)	MAX LOAD(KG) SINGLE/DUAL	MAX PRESSURE (KPA)
11R22.5	16	8.25	146/143M	1050	279	3000/2725	830
12R22.5	18	9.00	152/149M	1084	300	3550/3250	930
295/80R22.5	18	9.00	152/149M	1044	298	3550/3250	900
315/80R22.5	20	9.00	157/153L	1076	312	4125/3650	860



AP220 is a premium all position tyre for regional road.

## Pattern characteristic:



The unique main groove design provides greater grip and traction, as well as improves stability and reduces irregular wear.



The large and deep shoulder grooves increase traction.



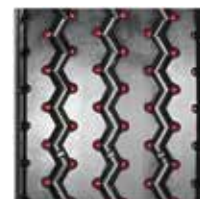
The wider running surface and high strength tread formula improve puncture and scrub resistance.



SIZE	PR	STANDARD RIM	LI/SR	OUTER DIAMETER (mm)	SECTION WIDTH (mm)	MAX LOAD(KG) SINGLE/DUAL	MAX PRESSURE (KPA)
6.50R16LT	12	4.50	110/105K	755	182	1060/925	670
7.00R16LT	14	5.50F	118/114K	778	202	1500/1320	770
7.50R16LT	14	6.00G	122/118L	802	210	1500/1320	770
8.25R16LT	16	6.50H	128/124K	860	230	1800/1600	770
8.25R20	16	6.50H	139/137K	974	236	2430/2300	930
9.00R20	16	7.00	144/142K	1018	258	2800/2650	900
10.00R20	18	7.50	149/146K	1052	275	3250/3000	930
11.00R20	18	8.00	152/149K	1082	286	3550/3250	930
12.00R20	20	8.50	156/153K	1122	313	4000/3650	900
12.00R24	20	8.50	160/157K	1226	313	4500/4125	900
11R22.5	16	8.25	146/143M	1050	279	3000/3275	830
12R22.5	18	9.00	152/149M	1084	300	3550/3250	930
13R22.5	18	9.75	154/151L	1124	320	3750/3450	850
295/80R22.5	18	9.00	152/149M	1044	298	3550/3250	900
315/80R22.5	20	9.00	157/153L	1076	312	4125/3650	860

AP221 is designed for all position regional road application.

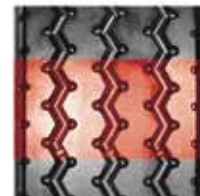
## Pattern characteristic:



Tread block sipes provide superior wet performance by improving traction and grip.



Zigzag grooves reduce stone retention.



Wide tread and special tread compound maintain uniform wear for a longer tread life.



SIZE	PR	STANDARD RIM	LI/SR	OUTER DIAMETER (mm)	SECTION WIDTH (mm)	MAX LOAD(KG) SINGLE/DUAL	MAX PRESSURE (KPA)
12.00R24	20	8.50	160/157K	1226	313	4500/4125	900



AP222 is a premium all position tyre for regional road.

## Pattern characteristic:



New pattern design and tread formulation together work to create a strong tread and casing.



Groove pattern provide strong grip in dry and wet weather to reduce the chances of hydroplaning.



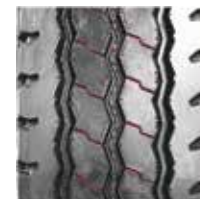
Strong shoulder design improves scrub resistance.



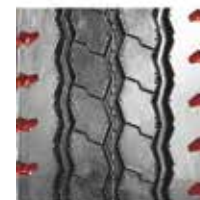
SIZE	PR	STANDARD RIM	LI/SR	OUTER DIAMETER (mm)	SECTION WIDTH (mm)	MAX LOAD(KG) SINGLE/DUAL	MAX PRESSURE (KPA)
12.00R24	20	8.50	160/157K	1226	313	4500/4125	900

AP225 is a premium all position tyre for regional road.

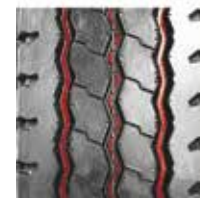
## Pattern characteristic:



Sipes provide the tyre with a strong grip and improved skid resistance.



Super wide running surface, shoulder design, and special tread compound improve scrub resistance.



The inclined zigzag grooves and rubber stone ejector at the bottom effectively reduce stone retention.



SIZE	PR	STANDARD RIM	LI/SR	OUTER DIAMETER (mm)	SECTION WIDTH (mm)	MAX LOAD(KG) SINGLE/DUAL	MAX PRESSURE (KPA)
9.00R20	16	7.00	144/142K	1018	258	2800/2650	900
10.00R20	18	7.50	149/146K	1052	275	3250/3000	930
11.00R20	18	8.00	152/149K	1082	286	3550/3250	930
12.00R20	20	8.50	156/153K	1122	313	4000/3650	900

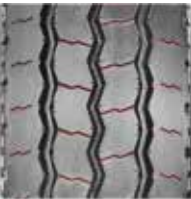


# AP226

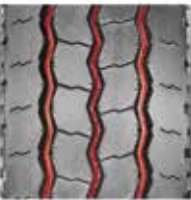


AP226 is designed for all position and regional road application.

## Pattern characteristic:



Fine pattern block sipes and small grooves provide excellent skid resistance.



Three main grooves enhance traction and grip.



Stone ejectors at the bottom of the grooves improve the self-cleaning.



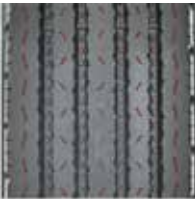
SIZE	PR	STANDARD RIM	LI/SR	OUTER DIAMETER (mm)	SECTION WIDTH (mm)	MAX LOAD(KG) SINGLE/DUAL	MAX PRESSURE (KPA)
12.00R24	20	8.50	160/157K	1226	313	4500/4125	900

# AP265

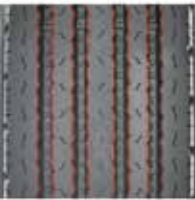


AP265 is a premium steer tyre for regional applications.

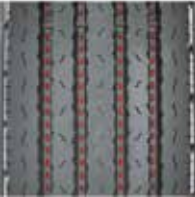
## Pattern characteristic:



Z-sipes improve traction in wet conditions and allow the tyre to run cool to provide a longer tread life.



Unique tread wall bite edges reduces irregular wear and improve traction.



Stone ejectors reduce stone retention.



SIZE	PR	STANDARD RIM	LI/SR	OUTER DIAMETER (mm)	SECTION WIDTH (mm)	MAX LOAD(KG) SINGLE/DUAL	MAX PRESSURE (KPA)
7.50R16LT	14	6.00G	122/118L	802	210	1500/1320	770
9.5R17.5	18	6.75	143/141M	842	240	2725/2575	930

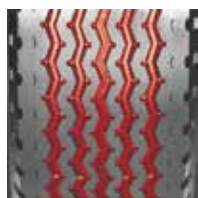


# AT301

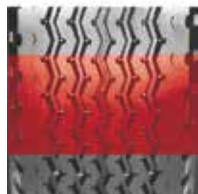


AT301 is a premium steer and trailer tyre for long haul road. Having low noise and low rolling resistance characters.

## Pattern characteristic:



With excellent anti-side-skid character and drainage character.



Ultra-wide running surface for better stability and super abrasion resistance.



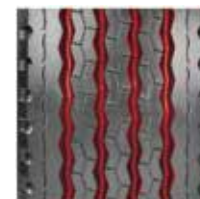
SIZE	PR	STANDARD RIM	LI/SR	OUTER DIAMETER (mm)	SECTION WIDTH (mm)	MAX LOAD(KG) SINGLE/DUAL	MAX PRESSURE (KPA)
385/65R22.5	20	11.75	160K	1072	389	4500	900

# AT302

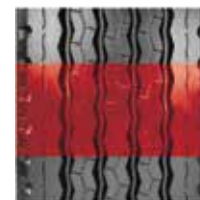


AT302 is a premium steer and trailer tyre for regional road. Having excellent fuel efficiency character.

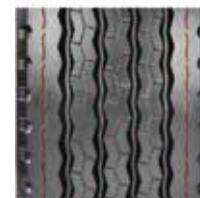
## Pattern characteristic:



Zigzag grooves reduce stone retention.



Ultra-wide running surface for better stability and super abrasion resistance.



Small grooves allow the tyre to run cool and improve skid resistance.



SIZE	PR	STANDARD RIM	LI/SR	OUTER DIAMETER (mm)	SECTION WIDTH (mm)	MAX LOAD(KG) SINGLE/DUAL	MAX PRESSURE (KPA)
385/65R22.5	20	11.75	160K	1072	389	4500	900

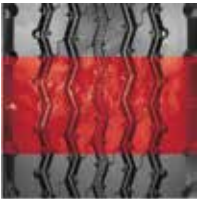


# AT303

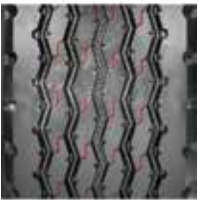


AT303 is a premium steer and trailer tyre for regional road. Special tread compound improves tread life.

## Pattern characteristic:



Ultra-wide running surface for better stability and super abrasion resistance.



Interlocking sipes improve stability and uniform wear.



Unique shoulder groove design improves stability.



SIZE	PR	STANDARD RIM	LI/SR	OUTER DIAMETER (mm)	SECTION WIDTH (mm)	MAX LOAD(KG) SINGLE/DUAL	MAX PRESSURE (KPA)
385/65R22.5	20	11.75	160K	1072	389	4500	900

# AD658



AD658 is a premium drive tyre for regional applications. High strength casing for improved durability.

## Pattern characteristic:



Trend block sipe design improves grip.



Open shoulder and tread groove design reduce stone retention and improve traction.



Stone ejectors at the bottom of the grooves reduce stone retention.



SIZE	PR	STANDARD RIM	LI/SR	OUTER DIAMETER (mm)	SECTION WIDTH (mm)	MAX LOAD(KG) SINGLE/DUAL	MAX PRESSURE (KPA)
11R22.5	16	8.25	146/143M	1050	279	3000/2725	830
11R24.5	16	8.25	149/146M	1100	279	3250/3000	830
285/75R24.5	16	8.25	147/144L	1056	283	3075/2800	830
295/75R22.5	16	9.00	146/143L	1014	298	3000/2725	830



# AD660



AD660 is a drive-position tyre for long-distance transportation applications.

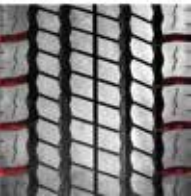
## Pattern characteristic:



Four main tread grooves provide excellent handling stability for a more comfortable ride.



Widened tread-to-road contact surface evens out pressure for improved driving stability.



Narrow grooves are optimized to reduce noise emissions.



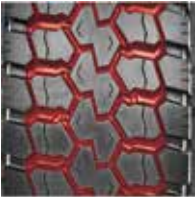
SIZE	PR	STANDARD RIM	LI/SR	OUTER DIAMETER (mm)	SECTION WIDTH (mm)	MAX LOAD(KG) SINGLE/DUAL	MAX PRESSURE (KPA)
12R22.5	18	9.00	152/149M	1084	300	3550/3250	930
13R22.5	18	9.75	154/151L	1124	320	3750/3450	850

# AD663

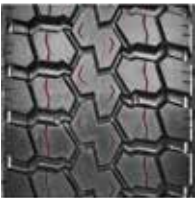


AD663 is a drive-position tyre for regional transportation applications.

## Pattern characteristic:



Deepened grooves provide for a longer tread life.



Special sipe design effectively improves self-cleaning capabilities.



Open shoulder and tread groove design reduce stone retention and improve traction.



SIZE	PR	STANDARD RIM	LI/SR	OUTER DIAMETER (mm)	SECTION WIDTH (mm)	MAX LOAD(KG) SINGLE/DUAL	MAX PRESSURE (KPA)
11.00R20	18	8.00	152/149K	1082	286	3550/3250	930
12R22.5	18	9.00	152/149M	1084	300	3550/3250	930



# AD665



AD665 is a drive-position tyre for long-distance transportation applications.

## Pattern characteristic:



Large block design helps enhance handling and traction on all season highway conditions.



Groove fence pattern reduces noise emissions for a more comfortable drive.



Deepened grooves for improved mileage.



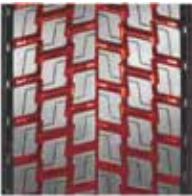
SIZE	PR	STANDARD RIM	LI/SR	OUTER DIAMETER (mm)	SECTION WIDTH (mm)	MAX LOAD(KG) SINGLE/DUAL	MAX PRESSURE (KPA)
315/80R22.5	20	9.00	157/153L	1076	312	4125/3650	860

# AD667



AD667 is a drive-position tyre for long-distance transportation applications. With special rubber compound provides high mileage and long tread life.

## Pattern characteristic:



Deepened grooves for improved mileage.



Large block design helps enhance handling and traction on all season highway conditions.



SIZE	PR	STANDARD RIM	LI/SR	OUTER DIAMETER (mm)	SECTION WIDTH (mm)	MAX LOAD(KG) SINGLE/DUAL	MAX PRESSURE (KPA)
295/80R22.5	18	9.00	152/149M	1044	298	3550/3250	900
315/70R22.5	20	9.00	154/150M	1014	312	3750/3350	900

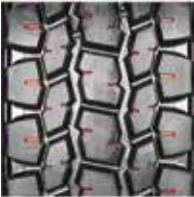


# AD668

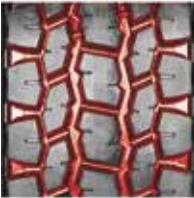


AD668 is a premium drive tyre for regional applications.

## Pattern characteristic:



Trend block sipe design improves grip.



Open shoulder and tread groove design reduce stone retention and improve traction.



High strength casing for improved durability.



SIZE	PR	STANDARD RIM	LI/SR	OUTER DIAMETER (mm)	SECTION WIDTH (mm)	MAX LOAD(KG) SINGLE/DUAL	MAX PRESSURE (KPA)
11R22.5	16	8.25	146/143M	1050	279	3000/2725	830
11R24.5	16	8.25	149/146M	1100	279	3250/3000	830

# AD672



AD672 is a premium drive tyre for mixed road condition applications.

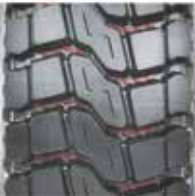
## Pattern characteristic:



Large block design helps enhance handling and traction on mixed road condition.



Deepened grooves for improved mileage.



Stone ejectors at the bottom of the grooves reduce stone retention.



SIZE	PR	STANDARD RIM	LI/SR	OUTER DIAMETER (mm)	SECTION WIDTH (mm)	MAX LOAD(KG) SINGLE/DUAL	MAX PRESSURE (KPA)
7.50R16LT	14	6.00G	122/118L	802	210	1500/1320	770
8.25R16LT	16	6.50H	128/124K	860	230	1800/1600	770
9.00R20	16	7.00	144/142K	1018	258	2800/2650	900
10.00R20	18	7.50	149/146K	1052	275	3250/3000	930
11.00R20	18	8.00	152/149K	1082	286	3550/3250	930
12.00R20	20	8.50	156/153K	1122	313	4000/3650	900
12.00R24	20	8.50	160/157K	1226	313	4500/4125	900



# AD676



AD676 is a premium drive tyre for mixed road condition applications.

## Pattern characteristic:



Large block design helps enhance handling and traction on mixed road condition.



Deepened grooves for improved mileage.



The rib in block is designed to improve stiffness and reduce partial wear.



SIZE	PR	STANDARD RIM	LI/SR	OUTER DIAMETER (mm)	SECTION WIDTH (mm)	MAX LOAD(KG) SINGLE/DUAL	MAX PRESSURE (KPA)
9.5R17.5	18	6.75	143/141M	842	240	2725/2575	930
315/80R22.5	20	9.00	157/153L	1076	312	4125/3650	860

# AD695



AD695 is a drive-position tyre for long-distance transportation applications.

## Pattern characteristic:



Large block design helps enhance handling and traction on all season highway conditions.



Rib groove pattern reduces noise emissions for a more comfortable drive.



Deepened grooves for improved mileage.



SIZE	PR	STANDARD RIM	LI/SR	OUTER DIAMETER (mm)	SECTION WIDTH (mm)	MAX LOAD(KG) SINGLE/DUAL	MAX PRESSURE (KPA)
11R22.5	16	8.25	146/143M	1050	279	3000/2725	830
12R22.5	18	9.00	152/149M	1084	300	3550/3250	930
295/80R22.5	18	9.00	152/149M	1044	298	3550/3250	900



# AM800

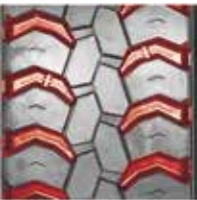


AM800 is a premium drive tyre for mixed road condition applications.

## Pattern characteristic:



The small grooves between the blocks allow the tyre to run cool and improve uniform tread wear.



Deepened grooves for improved mileage.



Overall tread pattern design is specially designed to improve block rigidity in the center and provide better balance on the shoulders to improve uniform wear.



SIZE	PR	STANDARD RIM	LI/SR	OUTER DIAMETER (mm)	SECTION WIDTH (mm)	MAX LOAD(KG) SINGLE/DUAL	MAX PRESSURE (KPA)
12.00R24	20	8.50	160/157K	1226	313	4500/4125	900

# AM803



AM803 is a premium driving tyre for mixed road condition.

## Pattern characteristic:



New pattern design improve grip and traction.



Open shoulder reduce stone retention and improve traction.



Stone ejectors at the bottom of the grooves reduce stone retention.



SIZE	PR	STANDARD RIM	LI/SR	OUTER DIAMETER (mm)	SECTION WIDTH (mm)	MAX LOAD(KG) SINGLE/DUAL	MAX PRESSURE (KPA)
10.00R20	18	7.50	149/146K	1052	275	3250/3000	930



# AM805



AM805 is a premium driving tyre for mixed road condition.Extra deep tread and M&S lug pattern are designed specifically for on and off-road applications.

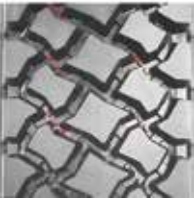
## Pattern characteristic:



Irregular shape block design help increase driving ability on mixed road condition and improve grip and traction performance.



Open grooves maximizes self-cleaning capabilities.



Rib design inside the groove reduce stone retention.



SIZE	PR	STANDARD RIM	LI/SR	OUTER DIAMETER (mm)	SECTION WIDTH (mm)	MAX LOAD(KG) SINGLE/DUAL	MAX PRESSURE (KPA)
11R22.5	16	8.25	146/143M	1050	279	3000/2725	830
11R24.5	16	8.25	149/146M	1100	279	3250/3000	830

# AM806

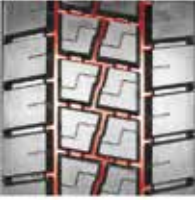


AM806 is a premium driving tyre for mixed road condition.

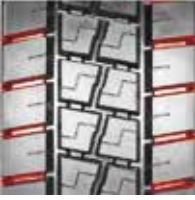
## Pattern characteristic:



Big deep block provide strong traction and braking power.



Optimized groove design for better self-cleaning capabilities and improved traction.



Open shoulder design allows the tyre to run cool.



SIZE	PR	STANDARD RIM	LI/SR	OUTER DIAMETER (mm)	SECTION WIDTH (mm)	MAX LOAD(KG) SINGLE/DUAL	MAX PRESSURE (KPA)
10.00R20	18	7.50	149/146K	1052	275	3250/3000	930



# AM810



AM810 is driving tyre for mixed road surface and poor road condition. Reinforced tyre carcass and bead improve the tyre load capacity. Special tread compound offers excellent wear resistance and high mileage.

## Pattern characteristic:



Big block design help increase driving ability on mixed road condition and improve grip and traction performance.



Angled grooves reduce stone retention.



Open shoulder design prevents uneven wear and improves heat dissipation ability.



SIZE	PR	STANDARD RIM	LI/SR	OUTER DIAMETER (mm)	SECTION WIDTH (mm)	MAX LOAD(KG) SINGLE/DUAL	MAX PRESSURE (KPA)
315/80R22.5	20	9.00	157/153L	1076	312	4125/3650	860
13R22.5	18	9.75	154/151L	1124	320	3750/3450	850

# AM811



AM811 is driving tyre for mixed road surface and poor road condition. The enhanced rubber compound improves cut and chunking resistance.

## Pattern characteristic:



The tread design is an aggressive multi-lug design which provides exceptional off-road traction.



Deep tread depth offers a longer tread life and provides exceptional fuel efficiency.



Open shoulder design delivers superior stability and uniform wear.



SIZE	PR	STANDARD RIM	LI/SR	OUTER DIAMETER (mm)	SECTION WIDTH (mm)	MAX LOAD(KG) SINGLE/DUAL	MAX PRESSURE (KPA)
12.00R24	20	8.50	160/157K	1226	313	4500/4125	900

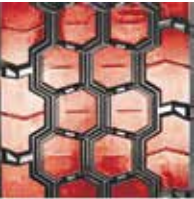


# AM812



AM812 is driving tyre for mixed road surface and poor road condition. Applicable for low speed use. Durable tyre casing for heavy loads.

## Pattern characteristic:



Aggressive block design provides outstanding traction on rough roads.



Wide tread and special tread compound resist chipping, chunking, and tearing.



Open shoulder design prevents uneven wear and improves heat dissipation ability.



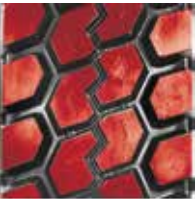
SIZE	PR	STANDARD RIM	LI/SR	OUTER DIAMETER (mm)	SECTION WIDTH (mm)	MAX LOAD(KG) SINGLE/DUAL	MAX PRESSURE (KPA)
12.00R20	20	8.50	156/153K	1122	313	4000/3650	900

# AM813

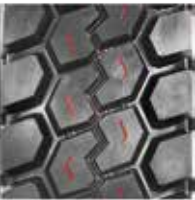


AM813 is a premium driving tyre for mixed road condition.

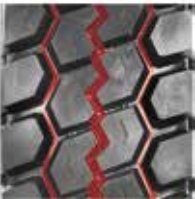
## Pattern characteristic:



Continuous central design ensures driving stability and smooth ride.



The central zigzag sipe ensures even wear and grip on wet and muddy surface.



The unique groove design ensures driving stability and improves self-cleaning capabilities.



SIZE	PR	STANDARD RIM	LI/SR	OUTER DIAMETER (mm)	SECTION WIDTH (mm)	MAX LOAD(KG) SINGLE/DUAL	MAX PRESSURE (KPA)
11.00R20	18	8.00	152/149K	1082	286	3550/3250	930
12.00R20	20	8.50	156/153K	1122	313	4000/3650	900



# AM910



AM910 is a premium tyre for mining road. Suitable for relatively poor road surface application. Low heat generating character and excellent loading capacity.

## Pattern characteristic:



Large block provides excellent grip ability and traction character.



Deepened groove depth improves tread life.



Ribs inside the grooves improve strength for better force transition and tear resistance while the pattern lugs improve grip.



SIZE	PR	STANDARD RIM	LI/SR	OUTER DIAMETER (mm)	SECTION WIDTH (mm)	MAX LOAD(KG) SINGLE/DUAL	MAX PRESSURE (KPA)
9.00R20	16	7.00	144/142K	1018	258	2800/2650	900
10.00R20	18	7.50	149/146K	1052	275	3250/3000	930
11.00R20	18	8.00	152/149K	1082	286	3550/3250	930
12.00R20	20	8.50	156/153K	1122	313	4000/3650	900

# AM913



AM913 is a premium tyre for mining road. Suitable for relatively poor road surface application. AM913 employs a directional pattern design for improved wearresistance and self-cleaning capabilities.

## Pattern characteristic:



The large horizontal lug design offers excellent traction.



Deepened groove depth improves tread life.



Ribs inside the grooves improve strength for better force transition and tear resistance while the pattern lugs improve grip.



SIZE	PR	STANDARD RIM	LI/SR	OUTER DIAMETER (mm)	SECTION WIDTH (mm)	MAX LOAD(KG) SINGLE/DUAL	MAX PRESSURE (KPA)
11.00R20	18	8.00	152/149K	1082	286	3550/3250	930
12.00R20	20	8.50	156/153K	1122	313	4000/3650	900



# AM915



AM915 is a premium tyre for mining road. Suitable for relatively poor road surface application. Low heat generating character and excellent loading capacity.

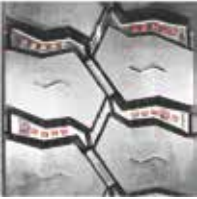
## Pattern characteristic:



Large block provides excellent grip ability and traction character.



Deepened groove depth improves tread life.



Stone ejectors at the bottom of the grooves reduce stone retention.



SIZE	PR	STANDARD RIM	LI/SR	OUTER DIAMETER (mm)	SECTION WIDTH (mm)	MAX LOAD(KG) SINGLE/DUAL	MAX PRESSURE (KPA)
11.00R20	18	8.00	152/149K	1082	286	3550/3250	930
12.00R20	20	8.50	156/153K	1122	313	4000/3650	900

# AM917



AM917 is a premium tyre for mining applications.

## Pattern characteristic:



Large block provides excellent grip ability and traction character.



Deepened groove depth improves tread life.



Open shoulder design and wide/deepened horizontal grooves reduce stone retention, and strong traction on non-paved roads.



SIZE	PR	STANDARD RIM	LI/SR	OUTER DIAMETER (mm)	SECTION WIDTH (mm)	MAX LOAD(KG) SINGLE/DUAL	MAX PRESSURE (KPA)
10.00R20	18	7.50	149/146K	1052	275	3250/3000	930
11.00R20	18	8.00	152/149K	1082	286	3550/3250	930
12.00R20	20	8.50	156/153K	1122	313	4000/3650	900
13R22.5	18	9.75	154/151L	1124	320	3750/3450	850





AM916 is a premium tyre for mining road.AM916 is specially strengthened tyre. Special rubber compound raise the carrying capacity to 150%. Excellent performance in mining area.

Pattern characteristic:



Large block provides excellent grip ability and traction character.



The deepened groove depth improves tread life.



Open shoulder design prevents uneven wear and improves heat dissipation ability.



SIZE	PR	STANDARD RIM	LI/SR	OUTER DIAMETER (mm)	SECTION WIDTH (mm)	MAX LOAD(KG) SINGLE/DUAL	MAX PRESSURE (KPA)
12R22.5	18	9.00	152/149M	1084	300	3550/3250	930



NO.	SIZE	PATTERN	NO.	SIZE	PATTERN
1	6.50R16-12	AP220	52	11R22.5-16	AP220
2	7.00R16-14	AP220	53		AD658
3	7.50R16-14	AP220	54		AD668
4		AP265	55		AD695
5		AD672	56		AM805
6	8.25R16-16	AP220	57	11R24.5-14	AS123
7	8.25R20-16	AD672	58	11R24.5-16	AP202
8		AP220	59		AD658
9	9.5R17.5-18	AP265	60		AD668
10		AD676	61		AM805
11	9.00R20-16	AP220	62	12R22.5-18	AP215
12		AP225	63		AP220
13		AD672	64		AD660
14		AM910	65		AD663
15	10.00R20-18	AP220	66		AD695
16		AP225	67		AM916
17		AD672	68	13R22.5-18	AP220
18		AM803	69		AD660
19		AM806	70		AM810
20		AM910	71		AM917
21	11.00R20-18	AM917	72	205/75R17.5-14	AP202
22		AS105	73	215/75R17.5-16	AP202
23		AS125	74	225/70R19.5-16	AP202
24		AP220	75	235/75R17.5-16	AP202
25		AP225	76	245/70R19.5-16	AP202
26		AD663	77	255/70R22.5-16	AP202
27		AD672	78	265/70R19.5-16	AP202
28		AM813	79	275/70R22.5-16	AP202
29		AM910	80	285/75R24.5-14	AS123
30		AM913	81	285/75R24.5-16	AP202
31		AM915	82		AD658
32		AM917	83	295/75R22.5-14	AS123
33	12.00R20-20	AP220	84	295/75R22.5-16	AP202
34		AP225	85		AD658
35		AD672	86		AS106
36		AM812	87	295/80R22.5-18	AP215
37		AM813	88		AP220
38		AM910	89		AD667
39	12.00R24-20	AM913	90		AD695
40		AM915	91	315/70R22.5-20	AS103
41		AM917	92		AD667
42		AP220	93	315/80R22.5-20	AS102
43		AP221	94		AP215
44	12.00R24-20	AP222	95		AP220
45		AP226	96		AD665
46		AD672	97		AD676
47		AM800	98		AM810
48		AM811	99	385/65R22.5-20	AT301
49	11R22.5-14	AS123	100		AT302
50	11R22.5-16	AP202	101		AT303
51		AP215			



**NOTE**

**NOTE**

